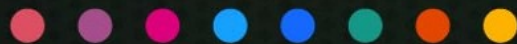
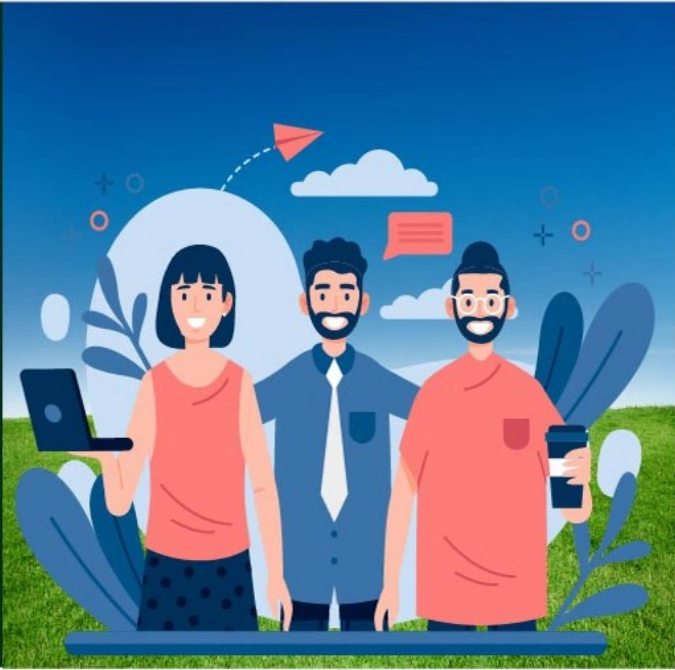




NUTRANTA

Corporate Profile





At Nutranta we believe in working closely with our Farmers, dealers and distributors.
We firmly believe in the concept of working and growing together.

Towards this end we ensure.

- ~ We provide our products which are best in quality.
- ~ We provide products which are available at most competitive price.
- ~ We ensure that our channel partners grow with us.
- ~ We believe in Govts vision of doubling farmers income by 2022.

Our Moto is "Together we grow"



Nutranta Seeds are the key stakeholders in fueling green revolution that begins delivering high quality seeds for the Indian commercial seeds market.

We continue to invest in Indian agriculture bringing productivity and profitability to farmers .

The company has vast experience in Major field crops and are backed by a very strong team of R&D, production, processing, marketing and sales. Our goal is ushering prosperity to farmers at national and global level.

In todays world environmental conditions, farming practices are constantly changing, therefor, our research & development teams strive very hard to develop plant traits and top performing hybrid seeds that are suitable for emerging markets.



About Us



Vision

To emerge as one of the advanced technology & innovation driven agri-enterprise, providing high yield, innovative seeds to farmers across the world



Mission

Research & Innovate for a greener tomorrow.



R&D

At Nutranta, we leverage our classical breeding knowhow and access to cutting edge technologies to develop a robust, market driven R&D Program



Quality

Quality isn't just a buzz word at Nutranta Seeds – It's WHAT WE DO and WHAT WE BELIEVE



Our Core Values

Nutranta Seeds leverages its classical breeding know-how and its access to cutting edge bioinformatics and molecular technologies to develop a robust, market driven R&D program. We are best in combining Local Knowhow with cutting edge technology.

We always combine phenotypic breeding methods with molecular breeding to minimize the selection process in developing the inbred lines. We plough back Substantial portion of our company's funds into our R&D

:

Latest Technology

At Nutranta we believe in continuous innovations and adoption of latest technology. Our mission is to develop and provide cutting edge genetics of quality hybrid maize, sorghum, bajra, mustard and wheat.



Innovative Ideas

Nutranta with its unique phenotypic breeding techniques have incorporated nutritional and quality traits like BMR (Brown mid rib), high brix % (sugar level) more leaf producing ability, high tillering ability into sorghum and millets.



Own R&D

Nutranta has set up a 20 acre in house R&D close to Hyderabad with a dedicated team of plant breeders and have been very conscious on developing hybrids with special traits that excel in the market.



In-house Testing Center

In addition to our R&D Hyderabad Center, we also have a regional office with testing facilities at Sunam (PB) which will provide us an opportunity to expedite the selection process for new hybrids. We have 3 Acres of Farm Land where we test our new and upcoming products.



Strong Production Team

We have a strong seed production team which performs periodic field inspections throughout the growing season in order to make sure the purity and quality of the seed as per T/L recommendations.



Industry Associations

We work with many industry leaders and other industry organizations to meet the demands of changing markets. We work with eminent professionals in the field of forage and field crops to keep Ourselves abreast with latest technologies and trends



R&D

Researching for a better & Greener Future



We have a fully Functional R&D Center along with a 20 acre of in house R&D close to Hyderabad. We have a team of Master Breeders who Constantly develop hybrids with special traits that excel in the market.

Our strength is forages, we offer versatile forage hybrids that are suitable for grazing, silage making/baling or can be used as hay or green chop.

We also has a strong seed production team which performs periodic field inspections throughout the growing season in order to make sure the purity and quality of the seed as per T/L recommendations. Lot wise samples are collected and sent to a ISTA approved labs to ensure the quality.



NUTRANTA



R&D Centre

Hyderabad





R&D is core to our business. We are committed to providing best quality Products through continuous research and innovation. We have a regional office with R&D and Testing facilities at Sunam (Pb) which provides us an opportunity to expedite the selection process for new hybrids.

This also gives us an opportunity to showcase and educate the farmers about new and more productive varieties that we introduce in market thus providing us direct feedback about our products.

This center also helps test various varieties of seeds in conditions that are suitable for northern parts of India.



NUTRANTA



Testing Centre

Sunam



Product Portfolio

Rye Grass Seeds



Wheat Seeds



MC Sorghum Seeds



Mustard Seeds



Maize Seeds



Pearl Millet Seeds



Fodder Products



We have a range of Fodder Products which include Multi-cut Sorghum, Sweet Sorghum, BMR Multicut & Sweet Sorghum and Multi-cut Pearl Millet (Bajra) We also provide excellent hybrid maize seeds for silage. For Rabi, we provide Rye Grass

Grain Products



In grains, our product offerings include Research wheat, Mustard, Grain Sorghum, Millet and Maize Products. We take pride in making continuous improvements in our products and try to introduce latest and best quality products in market



Sorghum Seeds



Sweet Sorghum



Pearl Millet Seeds



Maize Seeds



Rye Grass Seeds

Presenting Our Multi Cut SSGs

- Grass King - Fast Growing, High Tillering, MC
- Dairy Gold - Broad Leaf, Govt Notified, MC
- BMR Dairy King - Highly Digestible, Fast Growing, MC
- Dairy Master - Smart Fodder, More Leaf producing High Tillering, MC

Presenting Our High Brix SSG Range

- MUSHY - With Very high Brix Content upto 20%
- SUGAR GOLD - Very Sweet and Highly Digestible
- BMR SUGAR GOLD - Sweet Sorghum with BMR

This Bajra hybrid has excellent seedling vigor with very high tillering ability. It remains in the vegetative stage for longer period which will help farmer to have a wider window for harvest.

- Late maturity which gives wider window for harvest
- Higher tillering and regrowth ability
- Higher crude protein and digestive ability
- Leaves stay green for longer period
- Excellent drought tolerance
- Highly tolerant to disease

Presenting Our Silage Products

- HYM 111 - High Yield Spring Hybrid Maize - 80 Days*
- Nutra Shakti 777 - High Yield Summer Hybrid Maize - 85 Days*
- Nutra Early - Early Maturing Hybrid - 65 Days*

* For Silage Making

NUTRANTA Rye Grass

- Nutra Silk is High Nutritional Rye Grass
- Very good in Protein
- High Palatability
- Dry Matter Digestibility greater than 66%
- Improves milk productivity and Quality of Milk
- Yields upto 15 Mt per Cut per Acre in 30 days



Wheat Seeds



Maize Seeds



Grain Products



Mustard Seeds



MC Sorghum Seeds



Pearl Millet Seeds



NUTRANTA Wheat

- High Yield variety with more Starw for fodder
- Tolerant to Karnal Bunt and Yellow Rust
- Treated with Raxil
- 150 Days maturity
- Heat Tolerant
- Excellent Results



NUTRANTA Maize

- Nutra Amaze Sweet Corn
- Excellent for Human Consumption
- Excellent Yield



NUTRANTA Mustard

BRASSICA

- High Yield Medium Maturity Hybrid
- Bold grain and better oil %
- Resistant to all Major Diseases
- Excellent Quality
- More Profit for Farmers

Nutra Pure is our Grain Variety for Sorghum



- Excellent Yield
- Leaves stay green for longer period
- Excellent drought tolerance
- Highly tolerant to disease
- Suitable for both fodder and Grains

Nutra Pure is our Grain Variety for Hybarid Bajra



Nutra Pearl MILLET

- High yielding grain bajra hybrid
- Excellent lodging tolerance
- Tolerant to major pests and disease
- Stay green character from bottom of the plant
- Dual purpose hybrid
- Higher grain yield along with higher stover yield
- Dual benefit for the farmer



This is an early maturing hybrid which is suitable for grazing and hay making. It has the ability to regrow faster after cutting/grazing and can get multiple cuts. Being a Sudan grass it has ability to produce more tillers and fine stems with lower HCN (PRUSSIC ACID) and higher dry matter production.

- Early growth will help the farmer to have Multi cuts
- Excellent regrowth and tillering ability
- Higher protein and digestive ability
- Excellent drought tolerance
- Highly tolerant to major pest and disease
- Suitable for grazing and hay making
- Very Fast Growing Hybrid

Key Characters:

- No. of Tillers : 4-5
- Leafy fodder% : 55%
- Plant height (ft) : 8-10
- No. of Leaves : 14-16
- Leaf length (cm) : 75-80
- Leaf width (cm) : 5-7
- Juice % : 52%
- % of crude protein : 9-12%
- Yield/Acre/Harvest (Mt) : 25-30
- No. of Cuts : 5-6

Agronomy & Management:

- Seed Rate Kg/Acre : 10-12
- Sowing time :
 - Summer : Feb to April
 - Kharif : May to Aug
 - Rabi : Sept to Nov



NUTRANTA

Grass King

Fast Growing, Multicut Surghum





Dairy Gold is a govt notified forage sorghum. This is a Medium maturing hybrid which has very low Hydrogen cyanide (HCN) content, higher proteins and high digestibility with high juicy percentage (65%) and 6% total soluble sugars. It has thick stem which makes the plant tolerant to lodging.

- Medium maturity hybrid
- Higher green fodder yield
- Low HCN (Prussic acid) content
- Higher crude protein and digestibility
- Excellent regrowth and tillering ability
- Excellent drought tolerance
- Highly tolerant to major disease and pests
- Suitable for grazing and hay making
- Its got a sweet stem

Key Characters:

• No. of Tillers	: 2-4
• Leafy fodder%	: 60%
• Plant height (ft)	: 8-10
• No. of Leaves	: 14-16
• Leaf length (cm)	: 85-90
• Leaf width (cm)	: 8-10
• Juice %	: 65%
• % of crude protein	: 9-12%
• Yield/Acre/Harvest (Mt)	: 60-100
• No. of Cuts	: 5-6

Agronomy & Management:

• Seed Rate Kg/Acre	: 10-12
• Sowing time	
Summer	: Feb to April
Kharif	: May to Aug
Rabi	: Sept to Nov



NUTRANTA

Dairy Gold
Notified by Govt of India





This is an “All in One” hybrid which carries all the benefits together in one package. Early maturity trait will help the farmer to have the first cut at 55-60 after planting and a special trait BMR (brown midrib) in the leaves and stems will reduce the lignin content significantly which will make this hybrid more palatable, which in turn enhances the digestibility in the cattle compared to conventional Sudan hybrids.

- Fast growing Sudan type hybrid
- Smooth stems and leaves
- Prolific tillering and fast Re-growing ability
- Very low lignin increases the palatability
- High digestibility
- Higher tillering and regrowth ability

Key Characters:

- No. of Tillers : 5-8
- Leafy fodder% : 60%
- Plant height (ft) : 8-10
- No. of Leaves : 15-17
- Leaf length (cm) : 75-80
- Leaf width (cm) : 5-7
- Juice % : 58%
- % of crude protein : 9-13%
- Yield/Acre/Harvest (Mt) : 25-30
- No. of Cuts : 4-5

Agronomy & Management:

- Seed Rate Kg/Acre : 10-12
- Sowing time :
 - Summer : Feb to April
 - Kharif : May to Aug
 - Rabi : Sept to Nov



BMR DK
High Quality MC Sorghum





This hybrid stays in the vegetative stage for longer period which will help the farmer to harvest the crop at any growth stage which means the farmer has a wider harvest window. This hybrid has the ability to produce more than 21 quality leaves with high leaf to stem ratio than the regular sorghum Sudan grass and stays green for longer season. The regrowing ability is excellent even after grazing or cutting.

- Higher tillering and regrowth ability
- Higher protein and digestive ability
- Leaves stay green for longer period
- Excellent regrowth and tillering ability
- Excellent drought tolerance
- Highly tolerant to pests and disease
- Suitable for grazing and hay making

Key Characters:

- No. of Tillers : 5-8
- Leafy fodder% : 70%
- Plant height (ft) : 8-10
- No. of Leaves : 21-25
- Leaf length (cm) : 90-95
- Leaf width (cm) : 6-8
- Juice % : 58%
- % of crude protein : 12-15%
- Yield/Acre/Harvest (Mt) : 30-40
- No. of Cuts : 4-5

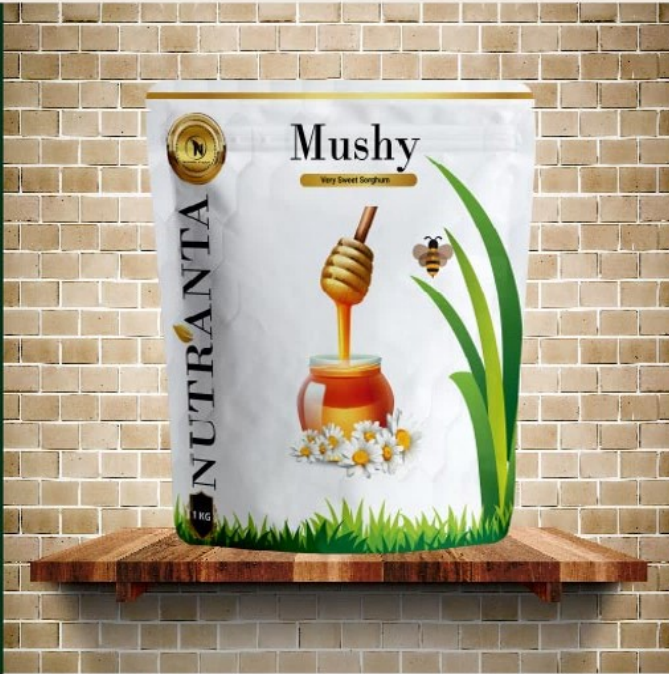
Agronomy & Management:

- Seed Rate Kg/Acre : 10-12
- Sowing time :
 - Summer : Feb to April
 - Kharif : May to Aug
 - Rabi : Sept to Nov



Dairy Master

Smart Fodder



Mushy has very sweet, juicy, thick stems with higher brix content (16-18%) and higher proteins. Sugar levels / sweetness increases as the plant gets older. Due to its thick stems and broad leaves like maize and due to its higher percentage of juiciness the hybrid should be harvested at milk stage for silage making in the pit.

- Longer vegetative stage
- High brix content sweet sorghum
- High juice percentage
- Higher protein and digestive ability
- Leaves stay green for longer period
- Single cut sorghum recommended for Silage
- Highly tolerant to pests and disease
- Suitable for silage making

Key Characters:

• No. of Tillers	: 1-2
• Leafy fodder%	: 60%
• Plant height (ft)	: 14-16
• No. of Leaves	: 18-20
• Leaf length (cm)	: 90-95
• Leaf width (cm)	: 8-10
• Juice %	: 65%
• % of crude protein	: 10-12%
• Yield/Acre (Mt)	: 30-35
• No. of Cuts	: Single
	Cut Recommended

Agronomy & Management:

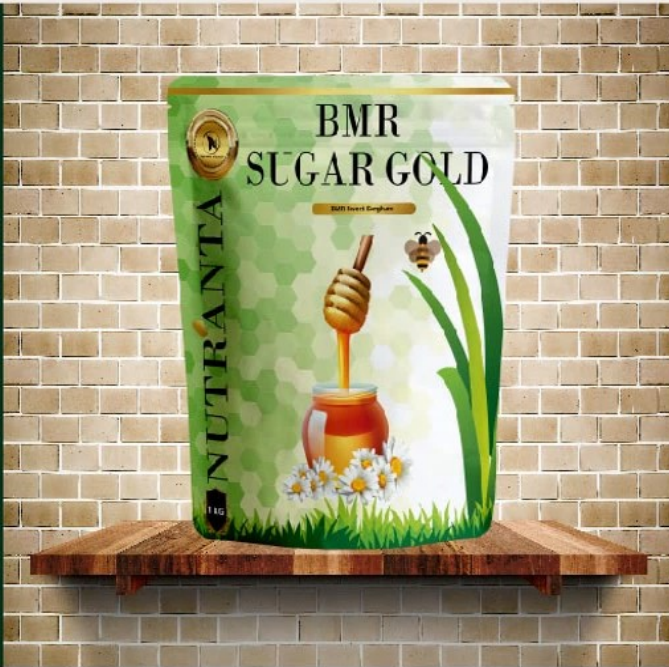
• Seed Rate Kg/Acre	: 5-6
• Sowing time :	
Summer	: Feb to April
Kharif	: May to Aug



NUTRANTA

Mushy
Very Sweet Sorghum





This is "ALL IN ONE" hybrid with all the benefits in just one hybrid. It has leaves with Brown Midrib and very sweet, juicy, thick stems with BMR trait. The BMR trait in the leaves and stems will reduce the lignin content significantly which will make this hybrid more palatable, which in turn enhances the digestibility in the cattle compared to conventional sweet sorghum Sudan hybrids.

- All in one multiple benefits hybrid
- Longer vegetative stage
- Large stems and huge leaves with BMR trait
- High brix content sweet sorghum
- High juice percentage
- Higher protein and digestive ability
- Leaves stay green for longer period
- Single cut recommended for silage/bailing

Key Characters:

- No. of Tillers : 1-2
- Leafy fodder% : 60%
- Plant height (ft) : 12-14
- No of Leaves : 18-20
- Leaf length (cm) : 90-95
- Leaf width (cm) : 8-10
- Juice % : 65%
- Yield/Acre (Mt) : 30-35
- No. of Cuts : Single Cut

Recommended

Agronomy & Management:

- Seed Rate Kg/Acre : 5-6
- Sowing time :
 - Summer : Feb to April
 - Kharif : May to Aug
 - Rabi : Sept to Nov



NUTRANTA



BMR Sugar Gold

BMR Sweet Sorghum



It has very sweet, juicy, thick stems with higher brix content (14-16%) and higher proteins. It has wider adaptability and the beauty of this hybrid is that the sweetness increases as the plant gets older. Due to its thick stems and broad leaves like maize and due to its higher percentage of juiciness the hybrid should be harvested at milk stage for silage making in the pit.

Key Characters:

- No. of Tillers : 1-2
- Leafy fodder% : 60%
- Plant height (ft) : 12-14
- No. of Leaves : 18-20
- Leaf length (cm) : 90-95
- Leaf width (cm) : 8-10
- Juice % : 65%
- % of crude protein : 10-12%
- Yield/Acre (Mt) : 30-35
- No. of Cuts : Single Cut Recommended

Agronomy & Management:

- Seed Rate Kg/Acre : 5-6
- Sowing time :
 - Summer : Feb to April
 - Kharif : May to Aug

- High brix content sweet sorghum
- Higher protein and digestive ability
- Leaves stay green for longer period
- Single cut sorghum recommended for Silage/bailing
- Medium drought tolerance
- Highly tolerant to pests and disease
- Suitable for silage making



NUTRANTA

Sugar Gold

Sweet Sorghum





This hybrid has excellent seedling vigor with very high tillering ability. It remains in the vegetative stage for longer period which will help farmer to have a wider window for harvest. This hybrid has higher tillering ability and high leaf to stem ratio with stay green character for longer season with higher biomass yield. It should be cut 6-8 feet above the ground to have better regrowth.

- No HCN (Prussic acid) exists in this hybrid
- Late maturity which gives wider window for harvest
- Higher tillering and regrowth ability
- Higher crude protein and digestive ability
- Leaves stay green for longer period
- Highly tolerant to disease
- Suitable for silage making

Key Characters:

- No. of Tillers : 18-25
- Leafy fodder% : 70%
- Plant height (ft) : 8-12
- No. of Leaves : 25-28
- Leaf length (cm) : 80-85
- Leaf width (cm) : 5-7
- Juice % : 40%
- % of crude protein : 15-18%
- Yield/Acre/Harvest (Mt) : 35-40
- No. of Cuts : 5-6

Agronomy & Management:

- Seed Rate Kg/Acre : 3-5
- Sowing time :
 - Summer : Feb to April
 - Kharif : May to Aug
 - Rabi : Sept to Nov



NUTRANTA



Nutra Gold

High Tillering, High Protein MC Bajra



This is a spring season hybrid highly suitable for fodder and grain purpose. Due to its higher juice percentage it is highly suitable for silage making.

This hybrid has broad, dark green leaves and thick stems with higher biomass yield. The crop should be harvested when the cobs are at milky stage for fodder purpose or they should be harvested at maturity stage for dual purpose.

Key Characters:

- Crop duration
fodder purpose : 80-90 days
dual purpose : 100-110 days
- Crude protein (%) : 12-14%
- Dry matter (%) : 32%
- Sweetness (% in cob) : 10%
- Silage suitability : Very Good
- Yield/Acre (Fodder) (mt) : 25-30
- Yield/Acre (Grains) (Qtls) : 30-35

Agronomy & Management:

- Seed Rate Kg/Acre
For Fodder : 10-12
For Grain : 10-12
- Sowing time : Spring

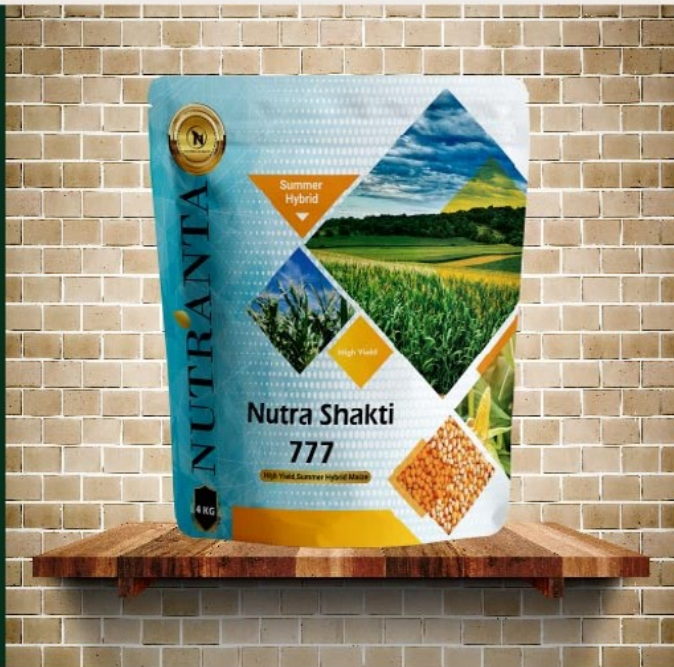


NUTRANTA

HYM 111

High Yield, Spring Hybrid Maize





This is a summer season hybrid highly suitable for fodder and grain purpose. Due to its higher juice percentage it is highly suitable for silage making.

This hybrid has broad, green leaves and thick stems with higher biomass yield. The crop should be harvested when the cobs are at milky stage for fodder purpose or they should be harvested at maturity stage for dual purpose

Key Characters:

- Crop duration
fodder purpose : 85-90 days
dual purpose : 110-120 days
- Crude protein (%) : 11-13%
- Dry matter (%) : 30%
- Sweetness (% in cob) : 8 %
- Silage suitability : Very Good
- Yield/Acre (Fodder) (Mt) : 25-30
- Yield/Acre (Grains) (Qtls) : 35-40

Agronomy & Management:

- Seed Rate Kg/Acre
For Fodder : 10-12
For Grain : 10-12
- Sowing time : Summer



NUTRANTA

Nutra Shakti 777

High Yield, Summer Hybrid Maize





This hybrid can be planted from January to September and it is highly suitable for fodder and grain purpose. Due to its earliness the high quality fodder can be harvested in just 60 days.

Though the hybrid is early maturing it has the ability to produce broad, green leaves and thick stems with which the farmer can achieve higher biomass yield.

Due to its higher juice percentage it is highly suitable for silage making. The crop should be harvested when the cobs are at milky stage for fodder purpose or they should be harvested at maturity stage for dual purpose.

Key Characters:

- Crop duration
 - fodder purpose : 60-65 days
 - dual purpose : 90-100 days
- Crude protein (%) : 8-10%
- Dry matter (%) : 28%
- Sweetness (% in cob) : 7%
- Silage suitability : Very Good
- Yield/Acre (Fodder) (Mt) : 22-25
- Yield/Acre (Grains) (Qtls) : 25-30

Agronomy & Management:

- Seed Rate Kg/Acre
 - For Fodder : 15-20
 - For Grain : 12-15
- Sowing time :
 - Summer : Mar to April
 - Kharif : June-Aug



NUTRANTA



Nutra Early

Early Maturing, Silage Maize Hybrid



Nutra Silk is an early maturing winter hybrid and has very sweet stem with stay green character which increases the digestibility. Higher tillering and regrowth ability with excellent drought tolerance.

- Early Maturing Winter Hybrid
- Very Sweet Stem with stay green character
- High Tillering & Regrowth ability
- Higher crude protein and digestibility
- Excellent drought tolerance
- Highly tolerant to major disease and pests

Key Characters:

- No. of Tillers : 5-7
- Plant Height (cm) : 100-120
- Plant Texture : Juicy
- Leaf Colour : Dark Green
- Leaf thickness : Medium
- Leaf margin : Smooth
- Leaf midrib : Normal
- No. of Cuts : 5-6
- Yield/Acre/Harvest (Mt) : 14-16

Agronomy & Management:

- Seed Rate Kg/Acre : 5-6
- Sowing time : Rabi



NUTRANTA

Nutra Silk

Highly Succulent Annual Rye Grass





NW - 426 is an excellent research variety wheat. This is suitable for sowing in all areas. Key features of this variety are as follows.

- Period of Spike Emergence- 95 days
- Average Plant Height- 103 cm
- Profuse tillering habit
- Highly tolerant to yellow rust
- Hard, Lustrous & Bold grains
- Per 1000 grain Weight- 46 g
- Tolerant to lodging due to sturdier stem
- Long spikelet with more grains
- Tolerant to terminal heat stress
- Suitable for both early & late sowing

Key Characters:

Plant height (cm) : 102-108
Yield Per Acre (Qtls) : 24-26

Agronomy & Management:

- Seed Rate Kg/Acre : 40
- Sowing time : Nov



NUTRANTA

NW - 426
High Quality Wheat





Nutra Amaze is an excellent Hybrid Maize Product which is very good for human consumption.

This hybrid has broad, dark green leaves and thick stems with higher biomass yield.

The crop should be harvested when the cobs are at milky stage for Human consumption.

Key Characters:

- Crop duration
Cob for Humans : 55-60 days
- Crude protein (%) : 8-10%
- Sweetness (% in cob) : 7%
- Yield/Acre (Grains) (Qtls) : 25-30

Agronomy & Management:

- Seed Rate Kg/Acre
For Grain : 12-15
- Sowing time : Kharif & Summer



NUTRANTA

Nutra Amaze

Sweet Hybrid Maize





Brassica is a high Yield Medium Maturity research variety.

- High Yield Medium Maturity
- Bold Grain and Better Oil %
- Resistant to all Major Diseases
- Excellent quality
- More Profit for the farmers
- Suitable for all Mustard Growing Areas

Key Characters:

Plant height (cm)	: 160-170
50% Flowering (Days)	: 42-45
Maturity (Days)	: 120-125
Number of Seeds / Pod	: 16-18
Oil Content %	: 39-40
Yield / Acre (Qtls)	: 12-14

Agronomy & Management:

- Seed Rate Kg/Acre : 1
- Sowing time : Rabi



NUTRANTA

Brassica

Fine Mustard Seed





Nutra Pearl is High grain and fodder yield crop and has a long compact ear head. This seed produces a tall plant with lodging tolerance.

It provides good stand ability coupled with high tolerance to various crop diseases

- High yielding grain bajra hybrid
- Excellent lodging tolerance
- Tolerant to major pests and disease
- Uniform Tillers
- Stay green character from bottom of the plant
- Dual purpose hybrid
- Higher grain yield along with higher stover yield
- Dual benefit for the farmer

Key Characters:

- | | |
|------------------------|-----------------|
| • Tiller Per Plant | : 2-4 |
| • Plant Hight (CM) | : 190-210 |
| • Ear Head Length (CM) | : >25 (Long) |
| • Grain Colour | : Lustrous Grey |
| • Yield / Acre (Qtls) | : 18-20 |
| • Maturity | : 82-85 Days |

Agronomy & Management:

- | | |
|---------------------|----------|
| • Seed Rate Kg/Acre | : 1.5 |
| • Sowing time | : Kharif |

Nutra Pearl

Hybrid Bajra



NUTRANTA





NUTRANTA

Our Product Range



Our Highest Priority is quality seeds. We provide high quality Hybrid Maize, Sorghum forage, Sorghum Sudan Grass, Hybrid Bajra, Hybrid Mustard and Wheat. Our grass products have been proved for excellent standability, regrowth ability, silage potential and very high nutritional quality. We strive hard to provide products that contain specific traits such as Brown Midrib which increases the nutritional quality and digestibility. Research and Development is a continuous process at Nutranta and we strive to provide more innovative and high yield products as we progress along.



Nutranta Seeds Pvt. Ltd.

#8-1-GST/03, Gruhashilpi Nest, Simhapuri Colony,
Bowrampet, Hyderabad - 500043, Telangana State



+91 83442 73000



www.nutrantaseeds.in

